

Fees

HK\$84,780 per year for 2 years
HK\$169,560 (Total)

Additional costs

Additional expenses may relate to the production of artworks. The costs will vary according to individual students' practice and discipline areas. As well, there will be associated costs for the final assessment of Major Project B in the form of displaying of artworks and the production of the Appropriate Durable Record.

How to Apply

1. Please make sure you meet the entry requirements.
2. A non-refundable application fee of HK\$200 will be levied.
3. Please submit the completed Award-bearing Program Application Form for Master of Fine Art (Form No. HKAS002MFA) together with relevant supporting documents, and application fee via one of the following ways:
 - in person to the Enrolment Office of Hong Kong Art School
Address:
Hong Kong Art School Chai Wan Campus
Room 819, 8/F, Youth Square,
238 Chai Wan Road, Chai Wan,
Hong Kong
Opening hours:
Monday to Friday: 10 am – 8 pm
Saturday: 10 am – 6 pm
closed on Sundays and public holidays
 - by post to the Enrolment Office of Hong Kong Art School
(address as above)

Tel: 2922 2822

Fax: 2865 0371

Email: enroledu@hkac.org.hk

Please visit the Hong Kong Art School website www.hkas.edu.hk for related recruitment updates.

Introduction of RMIT University

RMIT is a global university of technology, design and enterprise.

- One of Australia's original educational institutions dating back to 1887
- Among the top 15 universities in Australia (QS World University Rankings)
- Five-star QS ranking for excellence in higher education
- Among the top 20 universities in the world for Art and Design and the highest ranked in Australia*

*QS World University Rankings by Subject.

<https://hkart.rmit>

Every effort has been made to ensure the information contained in this publication is accurate and current at the date of printing. For the most up-to-date information, please refer to the Hong Kong Art School website before lodging your application: www.hkas.edu.hk

Printed in September 2017

Master of Fine Art

by coursework

Take Your Art to the World



A unique ART Programme
designed also for Working Adults
& Mature Art Lovers

Master of Fine Art

Program code
MC078HK

Duration
2 years

Medium of delivery
Instruction will be in English

Intake
January 2018

Program Information

The Master of Fine Art (MFA) by coursework is centered on your individual art practice and is designed to assist you in attaining a professional level of excellence. The program provides a stimulating and supportive environment for rigorous postgraduate study. It is pluralist in outlook, balancing the conceptual with the practical. Many students work in a cross disciplinary context. These approaches are encouraged and exist alongside art practices that are discipline specific.

Career Outlook and Pathways

The Master of Fine Art prepares you to take on the role of an informed contemporary artist. Graduates are currently employed in the arts industry and work as professional practising artists exhibiting nationally and internationally.

Upon successful completion of this program you may be eligible to undertake further studies in related programs at RMIT University, including Doctor of Philosophy (PhD) by project subject to meeting entry requirements.

Program Structure

The first year of the program is the coursework component and comprises of self-directed courses supported by professional practice seminars which examines ideas relevant to contemporary art practice. In the self directed courses, form and content are negotiated between you and your academic advisor based on issues generated from your individual art practice. This is complemented by individual tutorials, group critique sessions and lectures.

At the commencement of the second year of the program, you will make a formal presentation (visual lecture) of your first year individual art practice and undertake the Major Project Proposal Development course to assist in the development of your Major Project proposal. The Major Project courses run throughout the second year of the program, culminating in an exhibition of artwork for assessment. This is accompanied by an Appropriate Durable Record, which consists of a detailed proposal outlining your research and visual documentation of artwork undertaken during the program.

You are expected to spend at least 20 hours a week on your studies including studio practice, direct contact with academic advisors and participation in seminars and group tutorials. You will arrange your own studio space as appropriate to your individual art practice.

Year One	Credit points
Self Directed Projects A	24
Self Directed Projects B	24
Professional Practice Advanced Seminars	24

Year Two	Credit points
Major Project Proposal Development	12
Major Project A	24
Major Project B	36



▲ **Anybody Here?**
2014, Interactive video installation, Dimensions variable
by Laurence Lee, Master of Fine Art graduate

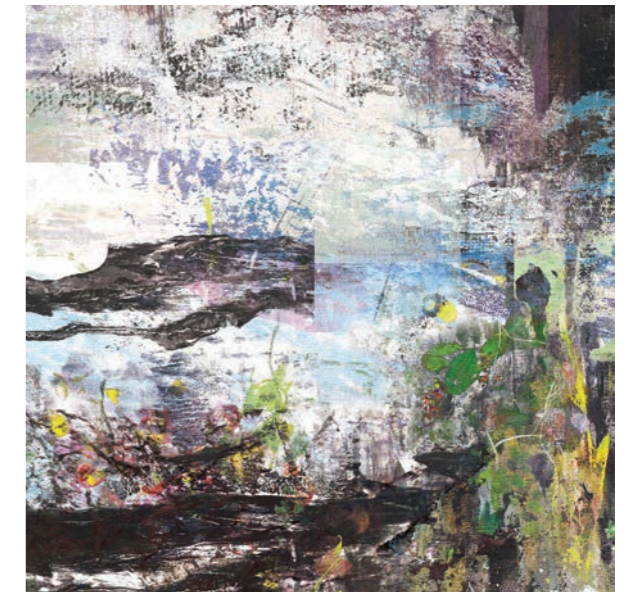
Cover image:
Before Collapse – 2nd version (details)
2015, Charcoal objects, Dimensions variable
by Matthew Tsang, Master of Fine Art graduate

Co-presented by Hong Kong Art School & RMIT University. Degree awarded by RMIT University.
Non-local Higher and Professional Education (Regulation) Ordinance Registration No.: 210888
Program terminology is in accordance with the partner University.
This program is internationally recognised. However, it is a matter of discretion for individual employers to recognise the qualification to which this program may lead.

▼ **Skull Room with Sun Shine**
2015, Installation, Mixed media,
Size variable
by Katie Ho, Master of Fine Art graduate



► **Haven't We Met Today? (detail)**
– partial view
2016, Giclee print on water colour paper,
200cm x 600cm
by Darky Lee, Master of Fine Art graduate



Industry Connections

Teaching staff are all successful artists with extensive industry experience. This expertise is complemented by guest lectures, workshops and studio visits by industry professionals, as well as a student cohort comprised of emerging and established artists.

Global Opportunities

The MFA programme delivered in Hong Kong engages you with the burgeoning and vibrant contemporary art scene. The program is local in content and global in outlook and reach. It provides vehicles for you to present your artworks and research in symposia, exhibition and workshops. These experiences provide valuable opportunities for you to connect and build networks for your careers as artists and researchers both nationally and internationally.

RMIT has a 5-Star QS ranking for excellence in higher education and is among the top 15 universities in Australia. We are 16th in the world for Art and Design and the highest ranked in Australia (QS 2016 World University Rankings by Subject).

Entry Requirements

Academic Entry Requirements

- a Bachelor of Arts (Fine Art) or equivalent degree from an approved institution, with a minimum GPA of 3.0 in the major discipline (or recognised equivalent); or
- a tertiary qualification together with considerable studio practice in an appropriate discipline which demonstrates an ability to undertake the program.

Any other equivalent qualifications or combination of qualifications and experience will be assessed by RMIT University on a case-by-case basis.

English Language Entry Requirements

Applicants are required to provide evidence of one of the following:

- IELTS (Academic) 6.5, no band less than 6.0; or
- TOEFL (Paper based test) score of 580 (TWE 4.5); or
- TOEFL (IBT) Overall score of 92 with minimum of 20 in all sections; or
- RMIT English Worldwide (REW) Advanced Plus or equivalent; or
- HKDSE score of 4 or more in English Language; or
- Pearson Test of English (PTA (A)) 58 (no communication band less than 50); or
- Cambridge English (Advanced CAE) (up to 2014): 58 with no less than 'borderline' in each skill; or
- Cambridge English (Advanced CAE) 2015 onwards: 176 with no less than 169 in any component; or
- Other equivalent qualifications as listed on the RMIT website (URL: <http://www.rmit.edu.au/study-with-us/international-students/apply-to-rmit-international-students/entry-requirements/english-requirements/english-language-proficiency-tests/>); or
- Successful completion of at least the equivalent of a two year tertiary program of at least AQF Level 5 within the past five years, where English is the language of teaching and assessment.



◀ **Grandma Hand**
2015,
Photographic documentation,
72cm x 40cm
by Chi Wong,
Master of Fine Art graduate